

LATE BREAKING NEWS...

ROADMASTER ACTIVE SUSPENSION

REDUCES FUEL CONSUMPTION!

It's True! If you tow an RV or trailer, carry a load, or transport several people in a multi-passenger van ROADMASTER ACTIVE SUSPENSION will save you money...

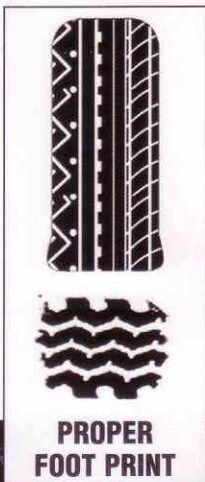
UP TO 20% ON YOUR FUEL BILL every time you fill up.

With spiraling fuel prices, everyone is looking for ways to cut back and save on fuel. Problem is, there's so many bogus products on the market that have made false fuel saving claims, people have become rather skeptical. **Don't confuse** Roadmaster Active Suspension (RAS) with these products. RAS does **reduce fuel costs** when installed on leaf spring vehicles. Here's the how and why:

When a vehicle with rear leaf spring suspension is loaded the arch of the springs are reduced. Additional weight will ultimately cause the rear of the vehicle to sag. When this vehicle is in motion the now compromised rear suspension can no longer fully absorb and dissipate the load. Furthermore, the undulating road surface will compound the problem, reducing even more the leaf springs ability to support and absorb. Unable to dissipate (in part or whole) via the leaf springs, the force of the load will transfer to axle, wheels and ultimately a large percentage to the rear tires. This causes the sidewalls of the tires to continually flex and bulge in the area where the tires make contact with the road. This tire bulging at road surface creates a continuously

changing improper "footprint" (similar to a deflated tire) and that increases roll resistance. Increasing roll resistance makes the engine work harder and hence the vehicle burns more fuel.

When Roadmaster Active Suspension is installed the rear leaf springs are supported by two variable rated coil springs, thereby converting a **passive** system to an **active suspension** system. These **extremely powerful coils** are the key to our success as they not only assist the leaf springs in supporting load and stabilizing the vehicle but also when strain from load is applied, a stabilizing action (unique to RAS) comes into effect immediately, **absorbing** the force of the load. On undulating road surfaces, RAS controls the rate of deflection of the leaf springs again absorbing and dissipating the energy. The consequence of this continuously 'absorbing and dissipating load force' action is a controlled discharge of energy through the leaf springs, axle, wheels, and tires creating an improved balance between the tires and road surface contact. The result is a more proper, constant tire to road footprint and vastly reduced roll resistance... the key to considerable fuel savings.



**PROPER
FOOT PRINT**



**IMPROPER
FOOT PRINT**



BEFORE AND AFTER ILLUSTRATIONS SHOWING THE ADVANTAGE OF ROADMASTER ACTIVE SUSPENSION

WITH RAS
Decreased roll resistance for improved fuel efficiency

WITHOUT RAS
Excessive tire bulging with increased roll resistance



THE PATENTED RAS IS BY DESIGN; THE ONLY LOAD ASSIST PRODUCT ON THE MARKET THAT WORKS ON A COMPLETELY DIFFERENT 'HORIZONTAL PRINCIPAL' TO SUPPORT THE REAR LEAF SPRINGS AND THE ONLY PRODUCT THAT WILL ACHIEVE THESE FUEL SAVINGS.

▪ NOTE: REDUCING ROLL RESISTANCE AND HARMFUL FLEXING AND BULGING OF TIRES RESULTS IN EXTENDED TIRE LIFE ▪